

# PU1028

## Initializing Rutoken authentication dongle

*Please note that all the contents of Rutoken device will be permanently erased during the initialization.*

*All the contents of Rutoken ECP 2.0 Flash data card will be erased during the initialization if user PIN has been blocked before.*

*Rutoken Disk software will be completely disabled after the initialization.*

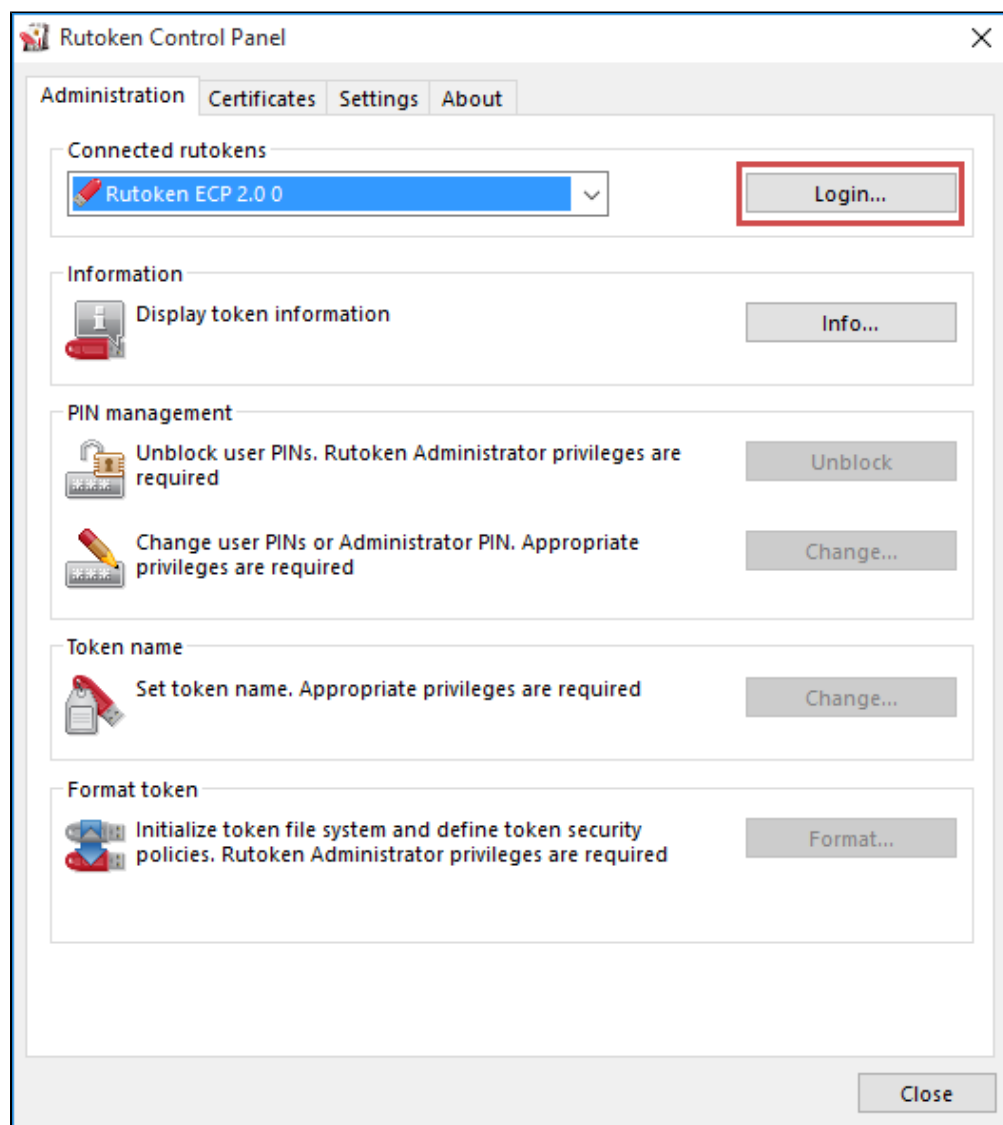
*To restore Rutoken Disk software after the initialization please follow the manual.*

*It's impossible to reinitialize blocked Rutoken device of earlier versions (marked as **0B0Z** or **0D3Z** on the device enclosure), you need to purchase a new one.*

Please follow the manual to install or update Rutoken drivers.

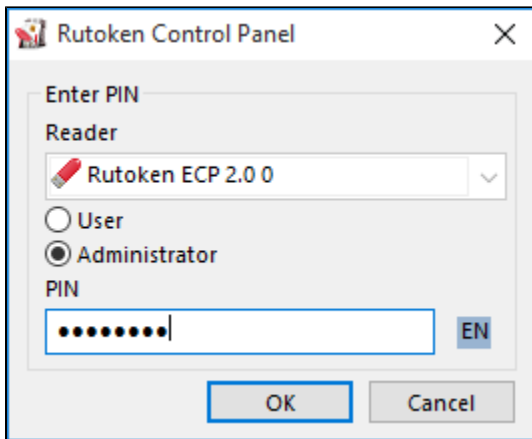
Click **Rutoken Control Panel** icon on Windows desktop or type **Rutoken Control Panel** in Windows search panel to start it.

When **Rutoken Control Panel** is opened select **Administration** tab. Then click the **Login** button in upper right corner.

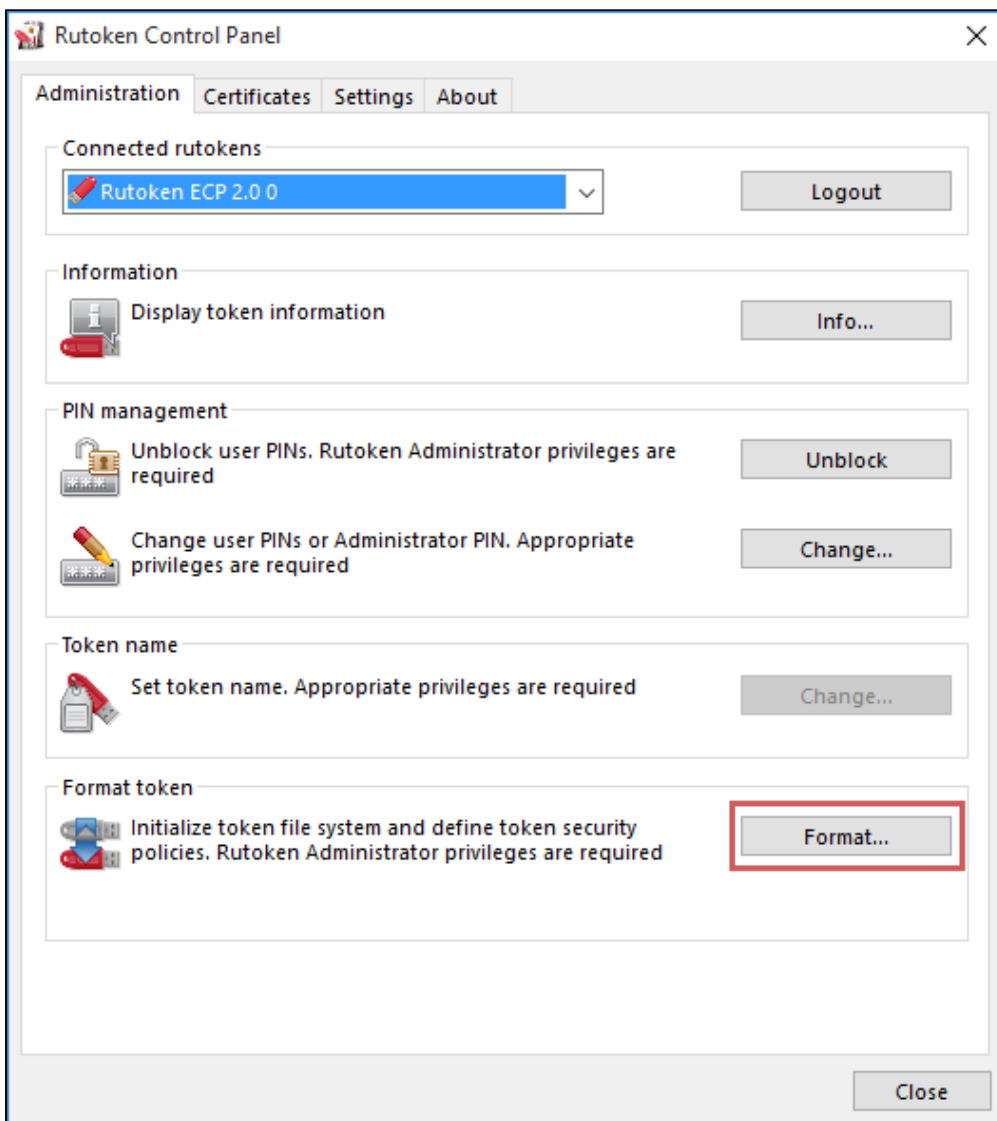


logon dialog choose the proper Rutoken device by selecting it in the dropdown box and tap **Administrator** radio button. Then enter Admin PIN and press **OK**.

The default Admin PIN is **87654321**.

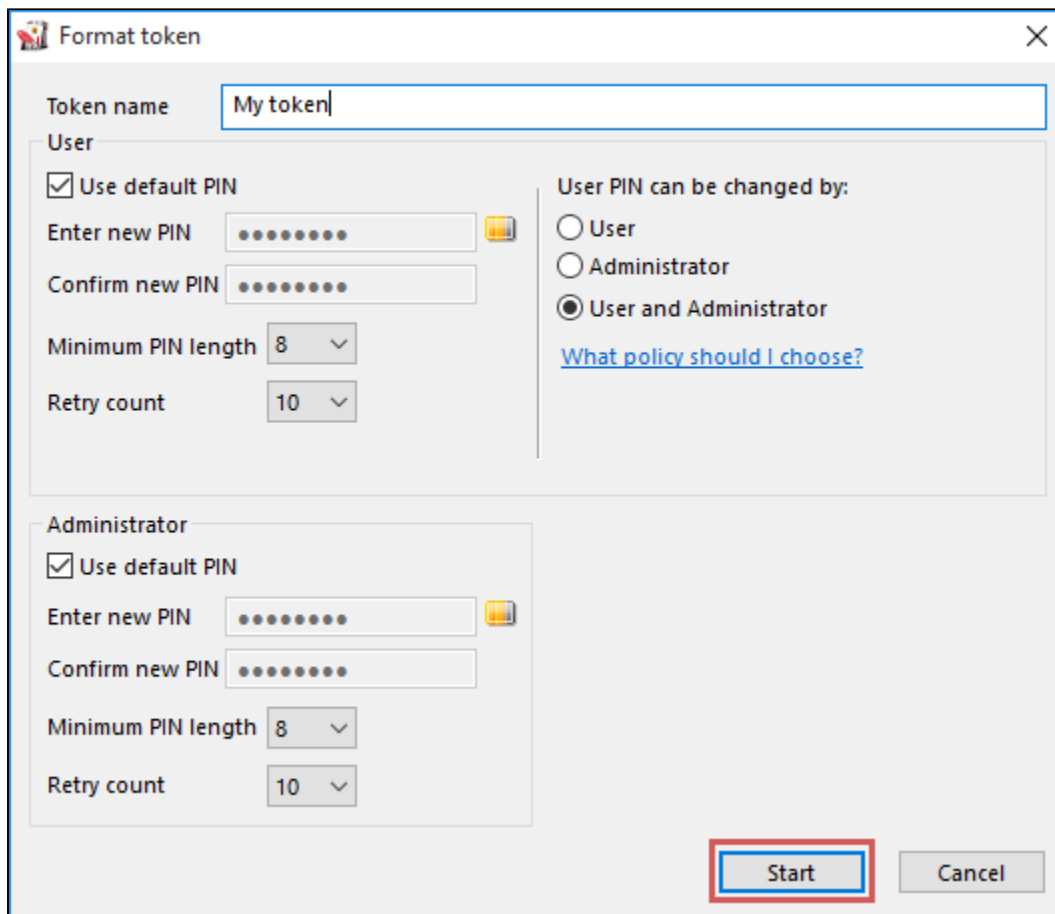


If Admin PIN is lost, you need to block Rutoken device by entering invalid PIN value so many times as required. The invalid PIN length should be greater than 6.



After **Format...** button is enabled click it to open **Format token** dialog box.

In this dialog you may set the new values of token name, User and Admin PIN's and permit the account keepers to change user PIN.



The 'Format token' dialog box is shown with the 'Token name' field set to 'My token'. Under the 'User' section, the 'Use default PIN' checkbox is checked. The 'Enter new PIN' and 'Confirm new PIN' fields are empty, with a minimum PIN length of 8 and a retry count of 10. The 'User PIN can be changed by:' section has three radio button options: 'User', 'Administrator', and 'User and Administrator', with the last one selected. A link 'What policy should I choose?' is present. The 'Administrator' section also has a 'Use default PIN' checkbox checked and the same PIN settings. The 'Start' button is highlighted with a red rectangle.

Format token

Token name: My token

User

☒ Use default PIN

Enter new PIN: [masked]

Confirm new PIN: [masked]

Minimum PIN length: 8

Retry count: 10

User PIN can be changed by:

☐ User

☐ Administrator

☒ User and Administrator

[What policy should I choose?](#)

Administrator

☒ Use default PIN

Enter new PIN: [masked]

Confirm new PIN: [masked]

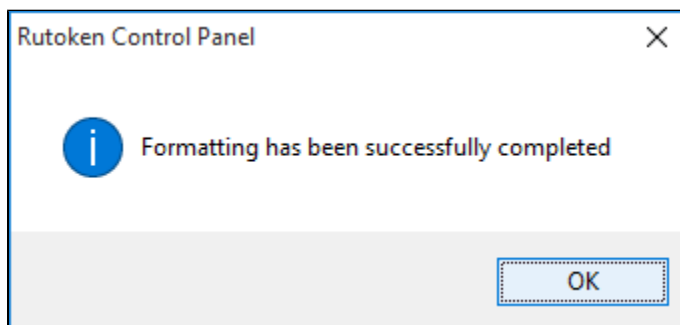
Minimum PIN length: 8

Retry count: 10

Start Cancel

Now click the **Start button** to process the initialization of Rutoken device. Click **Yes** to skip the warning dialog on **No** to prevent the operation.

Do not disconnect the Rutoken device or turn off the computer before the initialization is complete.



The 'Rutoken Control Panel' dialog box displays a message: 'Formatting has been successfully completed'. An 'OK' button is located at the bottom right.

Rutoken Control Panel

Formatting has been successfully completed

OK